



Leeds Safeguarding  
Adults Board



“I now feel safe  
in my home.”

## Supporting people to be safe in Leeds

If someone is experiencing or at risk of **abuse**, **neglect** or **self-neglect**, there are people who can help.

For advice or support, contact Leeds Adult Social Care:

- Tel: **0113 222 4401**
- BSL: **[www.leeds.gov.uk/accessibility](http://www.leeds.gov.uk/accessibility)**
- Visit: **Council One Stop Centres / Community Hubs**

Go to **[www.leedssab.org.uk](http://www.leedssab.org.uk)** for more information.



Leeds Safeguarding  
Adults Board



**“People listened  
and helped. I feel  
safe to go out again.”**

## **Supporting people to be safe in Leeds**

If someone is experiencing or at risk of **abuse**, **neglect** or **self-neglect**, there are people who can help.

For advice or support, contact Leeds Adult Social Care:

- Tel: **0113 222 4401**
- BSL: **[www.leeds.gov.uk/accessibility](http://www.leeds.gov.uk/accessibility)**
- Visit: **Council One Stop Centres / Community Hubs**

Go to **[www.leedssab.org.uk](http://www.leedssab.org.uk)** for more information.



Leeds Safeguarding  
Adults Board



“People helped us,  
when we needed  
it most.”

## Supporting people to be safe in Leeds

If someone is experiencing or at risk of **abuse**, **neglect** or **self-neglect**, there are people who can help.

For advice or support, contact Leeds Adult Social Care:

- Tel: **0113 222 4401**
- BSL: **[www.leeds.gov.uk/accessibility](http://www.leeds.gov.uk/accessibility)**
- Visit: **Council One Stop Centres / Community Hubs**

Go to **[www.leedssab.org.uk](http://www.leedssab.org.uk)** for more information.



Leeds Safeguarding  
Adults Board



“We worked out  
a plan together.  
I feel safe again.”

## Supporting people to be safe in Leeds

If someone is experiencing or at risk of **abuse**, **neglect** or **self-neglect**, there are people who can help.

For advice or support, contact Leeds Adult Social Care:

- Tel: **0113 222 4401**
- BSL: **[www.leeds.gov.uk/accessibility](http://www.leeds.gov.uk/accessibility)**
- Visit: **Council One Stop Centres / Community Hubs**

Go to **[www.leedssab.org.uk](http://www.leedssab.org.uk)** for more information.



Leeds Safeguarding  
Adults Board



“As soon as I spoke  
up, things started to  
get better.”

## Supporting people to be safe in Leeds

If someone is experiencing or at risk of **abuse**, **neglect** or **self-neglect**, there are people who can help.

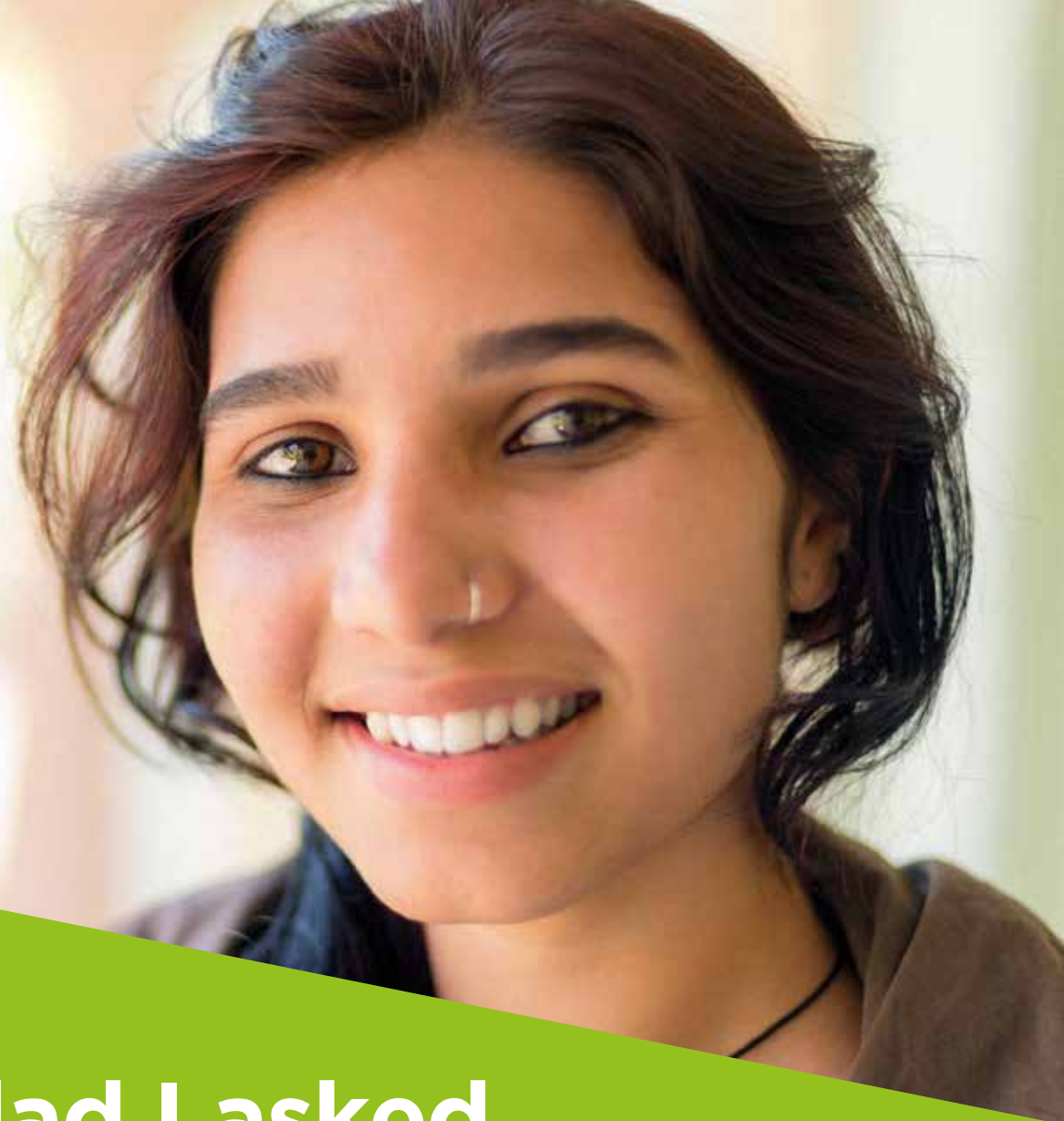
For advice or support, contact Leeds Adult Social Care:

- Tel: **0113 222 4401**
- BSL: **[www.leeds.gov.uk/accessibility](http://www.leeds.gov.uk/accessibility)**
- Visit: **Council One Stop Centres / Community Hubs**

Go to **[www.leedssab.org.uk](http://www.leedssab.org.uk)** for more information.



Leeds Safeguarding  
Adults Board



“I’m glad I asked  
for help. Now I feel  
safe again.”

## Supporting people to be safe in Leeds

If someone is experiencing or at risk of **abuse**, **neglect** or **self-neglect**, there are people who can help.

For advice or support, contact Leeds Adult Social Care:

- Tel: **0113 222 4401**
- BSL: **[www.leeds.gov.uk/accessibility](http://www.leeds.gov.uk/accessibility)**
- Visit: **Council One Stop Centres / Community Hubs**

Go to **[www.leedssab.org.uk](http://www.leedssab.org.uk)** for more information.